



<b>FACULTY/COLLEGE</b>	College of Business and Economics
<b>SCHOOL</b>	Johannesburg Business School
<b>DEPARTMENT</b>	Transport and Supply Chain
<b>CAMPUS(ES)</b>	APB
<b>MODULE NAME</b>	Logistics 2B
<b>MODULE CODE</b>	LOG02B2/PML22B2 LOG0Y2B/PML2B00
<b>SEMESTER</b>	Second
<b>ASSESSMENT OPPORTUNITY, MONTH AND YEAR</b>	Final Summative Assessment Opportunity November 2019

<b>ASSESSMENT DATE</b>	26 November 2019	<b>SESSION</b>	08H30-11H30
<b>ASSESSOR(S)</b>	Douglas Raza , Hugo van der berg , Joahn Venter		
<b>MODERATOR(S)</b>	Mr Laby Ilumbe		
<b>DURATION</b>	3 hrs (180 mins)	<b>TOTAL MARKS</b>	100

<b>NUMBER OF PAGES OF QUESTION PAPER (Including cover page)</b>	9
---	---

#### INFORMATION/INSTRUCTIONS:

- 
- Answer all the questions:
    - Section A: Multiple choice pink sheet provided
    - Section B: On the answer book provided
    - Question 2.1 Make use of the answer sheet provided
  - Question papers must be handed in.
  - Read the questions carefully and answer only what is asked.
  - Number your answers clearly.
  - Write neatly and legibly.
  - The general University of Johannesburg policies, procedures and rules pertaining to written assessments apply to this assessment.
-

## **SECTION A**

**[20 MARKS]**

**1. Which of the following statement is true concerning an agile supply chain strategy?**

- A. It has unpredictable demand and long lead time strategy
- B. It has predictable demand and long lead time strategy
- C. It has predictable demand and short lead time strategy
- D. It has unpredictable demand and short lead time strategy

**2. Which of the following statement is true concerning a kanban supply chain strategy?**

- A. It has unpredictable demand and long lead time strategy
- B. It has predictable demand and long lead time strategy
- C. It has predictable demand and short lead time strategy
- D. It has unpredictable demand and short lead time strategy

**3. Which of the following statement is true concerning a hybrid supply chain strategy?**

- A. It has unpredictable demand and long lead time strategy
- B. It has predictable demand and long lead time strategy
- C. It has predictable demand and short lead time strategy
- D. It has unpredictable demand and short lead time strategy

**4. The demand distribution as well as procurement policies of supply chain members are known as \_\_\_\_\_**

- A. No information sharing
- B. Partial information sharing
- C. Full information sharing
- D. Visibility

**5. Which of the following elements is a controllable element of global logistics?**

- A. Economic conditions
- B. Warehousing and storage strategies
- C. Technological factors
- D. Competitive forces

**6. \_\_\_\_\_ supplies the organisation with the expertise necessary in order to operate in a foreign or global environment.**

- A. Export management firms
- B. Freight forwarders
- C. Customs brokers
- D. Non vessel operating common carriers

**7. \_\_\_\_\_ consolidate and dispense containers that originate at or are bound for inland ports.**

- A. Export management firms
- B. Freight forwarders
- C. Customs brokers
- D. Non vessel operating common carriers

**8. \_\_\_\_\_ entails an agreement between two countries where one firm permits another firm to make a product, using their “recipe”**

- A. Export management firms
- B. Freight forwarders
- C. Licensing
- D. Non vessel operating common carriers

**9. Which of the following Incoterms groups has the least responsibility for the seller?**

- A. D Terms
- B. F Terms
- C. Ex Works
- D. C Terms

**10. Which of the following Incoterms groups has the least responsibility for the buyer?**

- A. D Terms
- B. F Terms
- C. Ex Works
- D. C Terms

**11. Which of the following statements describes the supply risk source?**

- A. Poor analysis and forecast of dependent and independent demand
- B. Global sourcing and reduction of the supplier base causing disruptions
- C. Bottlenecks, capacity problems and process issues
- D. External risks that may cause disturbances within the firm

**12 Which of the following describes the environmental risk source?**

- A. Poor analysis and forecast of dependent and independent demand
- B. Global sourcing and reduction of the supplier base causing disruptions
- C. Bottlenecks, capacity problems and process issues
- D. External risks that may cause disturbances within the firm

**13. Which of the following describes the control risk source?**

- A. Poor analysis and forecast of dependent and independent demand
- B. Distortions caused by internal policies on safety stock and minimum order quantities
- C. Bottlenecks, capacity problems and process issues
- D. External risks that may cause disturbances within the firm

**14. Which of the following is not a compliance risk?**

- A. Lack of formalized and integrated supply chain processes
- B. Misinterpreting foreign legislation
- C. Not understanding the interrelationships between different but related regulations
- D. Non-compliance with road transport regulations

**15. Which of the following statements is true concerning risk?**

- A. Risk implies the possibility of an event occurring together with a sense of uncertainty as to the likelihood of it occurring
- B. Risk is uncertainty based on a well-grounded possibility
- C. Risk refers to uncertain future events with a relative probability of occurrence
- D. All of the above

**16. Which of the following statements is true concerning humanitarian logistics?**

- A. It consists of similar concepts that are found and used in commercial, business and engineering logistics
- B. It includes the same functions or elements of business logistics such as transport, warehousing, procurement and materials handling
- C. The typical areas of operation are food distribution, shelter provision, water and sanitation services and medical support
- D. All of the above

**17. Which of the following is not true about the differences between commercial supply chains and humanitarian supply chain?**

- A. Commercial supply chains strive to increase profit and return on investment, while humanitarian supply chains ensure maximum benefit is provided to the beneficiaries
- B. Humanitarian logistics has low uncertainty while commercial logistics has high uncertainty
- C. Humanitarian supply chains focus on beneficiary survival, while commercial supply chains focus on
- D. None of the above

**18. Which of the following is not a typical actor in the humanitarian supply chain?**

- A. Government donor
- B. Retailers
- C. Community based organisations
- D. Military

**19. \_\_\_\_\_ have a very predictable demand from known customers, easily managed through tight collaboration with these customers.**

- A. Lean supply chains
- B. Agile supply chains
- C. Fully flexible supply chains
- D. Continuous replenishment supply chains

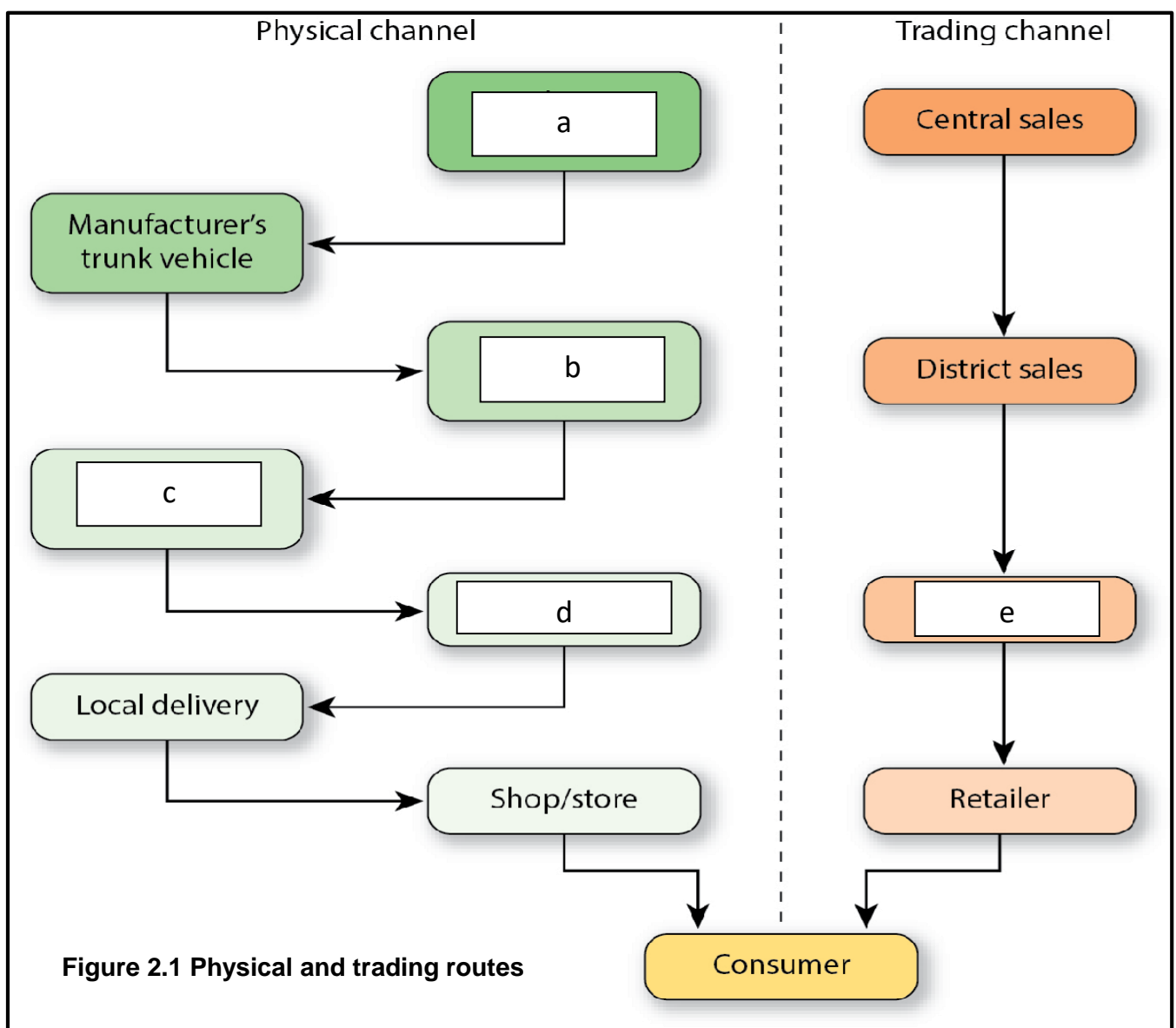
**20. \_\_\_\_\_ are unplanned at least until the last possible moment.**

- A. Lean supply chains
- B. Agile supply chains
- C. Fully flexible supply chains
- D. Continuous replenishment supply chains

**SECTION B****[80 MARKS]****QUESTION 1****[20 MARKS]**

1. ALBANY bakery wants to outsource some of their manufacturing activities. Identify all the disadvantages of outsourcing and fully explain each of these disadvantages with relevant practical examples relating back to ALBANY bakery. [10]

1.2 ALBANY bakery wants to improve their Logistics Network. Identify a, b, c, d and e in the figure cited below. Fully explain each of the points, which you have identified, with relevant practical examples, of how ALBANY can do to improve their Logistics Network in that particular point. [10]



**QUESTION 2****[20 MARKS]**

2.1 Using the 'Centre-of-Gravity' analysis determine the location for a suitable depot or distribution centre for ALBANY bakery, by making use if the information cited below. [10]

Plot / Fill in (complete)

SHOP	Different colour lipsticks	X-Coordinate	Y-Coordinate
M87V	16	13	5
B7O	28	3	9
H8MM5	65	2	3
KK9	14	5	11
ZZ1K	37	14	2
8AG67	25	10	13
PLM65	44	7	4

**NB!**

*Use the following symbols*

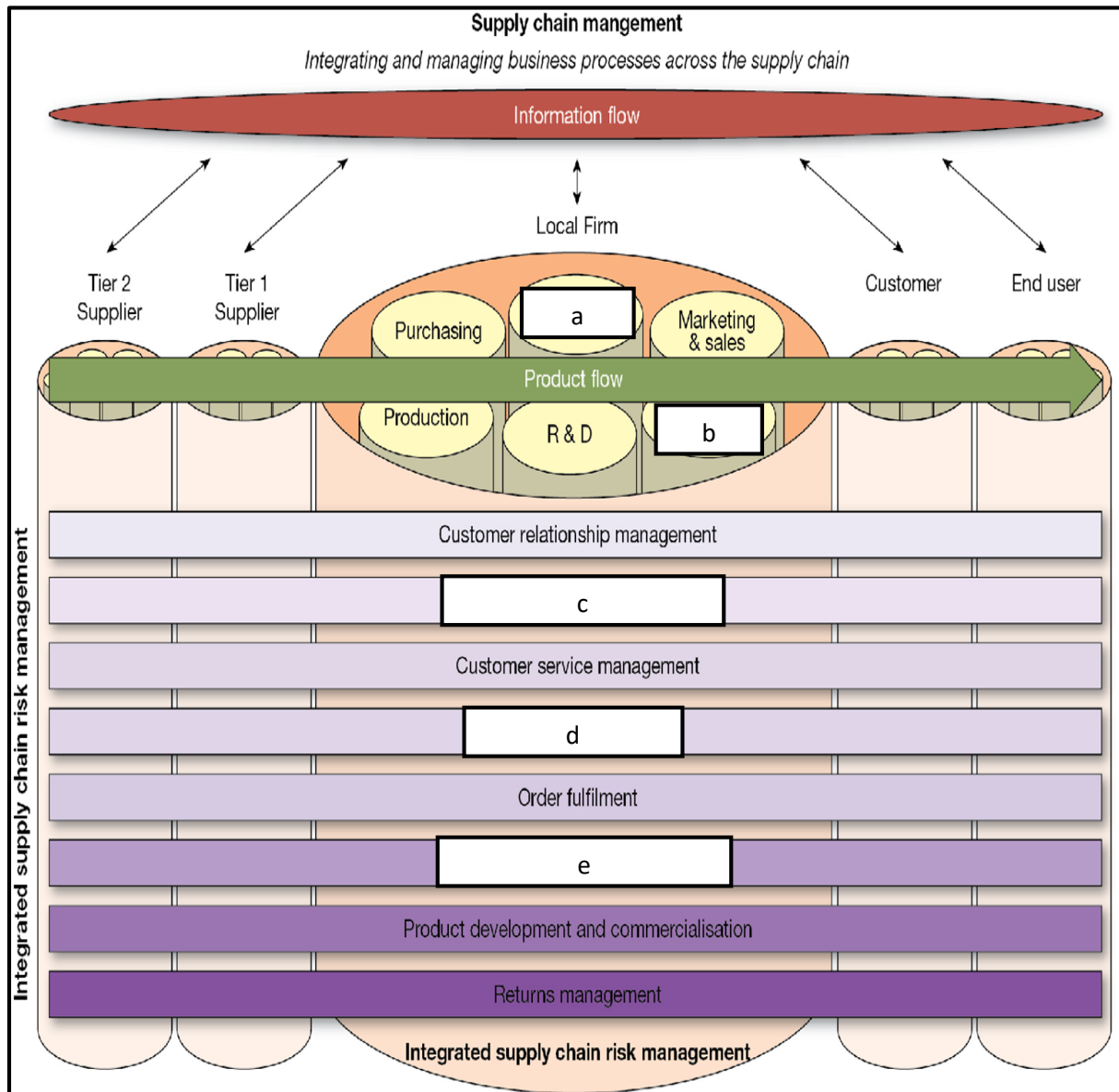
“ ● ” for X and Y position, place the “ ● ” in the middle of the block and *not* on the lines/sides



“ ✓ ” for the centre of gravity position



2.2 Your employer, **Facebook**, wants to identify risks in their supply chain. Identify a, b, c, d and e in the figure cited below. Fully explain each of the points, which you have identified, with relevant examples, of how **Facebook** can minimise risks their supply chain. [10]





**QUESTION 3****[20 MARKS]**

There are various factors and pressures that influence the global market environment. Some of these factors are controllable and uncontrollable. Let us first look at the uncontrollable factors.

Critically discuss only five uncontrollable factors.

*Note: Provide an example for each one of the five factors to indicate your understanding of the subject matter.* [20]

**QUESTION 4****[20 MARKS]**

4.1 Name any four (4) stakeholders or actors in humanitarian logistics and provide an example of each [8]

4.2 Discuss any four (4) characteristics of humanitarian supply chains [8]

4.3 Match the humanitarian situations with the generic supply chains [4]

Humanitarian situation	Generic supply chain
1. Emergency relief or response	A. Lean supply chain
2. Food distribution	B. Agile supply chain
3. Distribution of gifts-in-kind	C. Fully flexible supply chain
4. Development projects	D. Continuous replenishment

**End**