



## **FACULTY OF SCIENCE**

### **DEPARTMENT OF GEOGRAPHY, ENVIRONMENTAL MANAGEMENT & ENERGY STUDIES**

**MODULE**      **16GGR20047**  
                     GEOMORPHOLOGY

**CAMPUS**      **APK**

**EXAM**          **July 2019**

**ASSESSOR(S)**                      **Ms. M. Rabumbulu**

**INTERNAL MODERATOR**        **Prof. S. Tesfamichael**

**EXTERNAL MODERATOR**      **Mr. E. Kori**

**DURATION**    **3 HOURS**

**MARKS**   **100**

---

**NUMBER OF PAGES:** 3 Pages

#### **INSTRUCTIONS:**

**NB! Answer all questions as per instruction**

## QUESTION 1

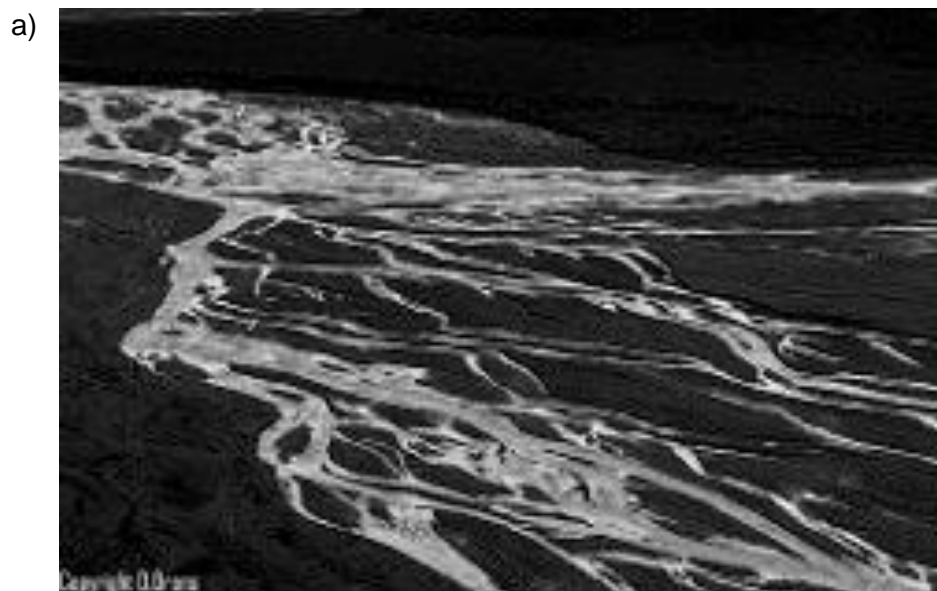
Refer to the statements below, summarise each of the statements made, outline its significance at the time of publication, and expand on its relevance to present day Geomorphology.

- a) "I consider this stratum of soil, with its vegetable coat, as a suit of armor, with which nature, in her wisdom, clothes the world, to protect its loose, moveable materials, and to prevent their being carried off by the rain and winds" **(Richardson, 1803).**
- b) "We find no vestige of a beginning, no prospect of an end." **Hutton, 1785.**
- c) "Most geomorphological research is *potentially* applicable to some problem of environmental management, although its applicability may not be apparent when it is first carried out." **Cooke & Doornkamp, 1990.**

[10x3]

## QUESTION 2

Identify each of the features indicated in photographs a and b. Briefly explain their geomorphic formation. Discuss their significance in understanding past climates.



b)



[2x10]

### QUESTION 3

Select ONE question.

How has the discipline of Geomorphology, and particularly the focus and approach to geomorphological research, changed since the late nineteenth century?

OR

What do you understand by the term *process* in Geomorphology? **Why** do Geomorphologists look at processes at the macro- and the micro-scale, and what tools do they use at these scales? **Why** is an understanding of processes important for Geomorphologists?

[50]

---

**TOTAL:****[100]**